



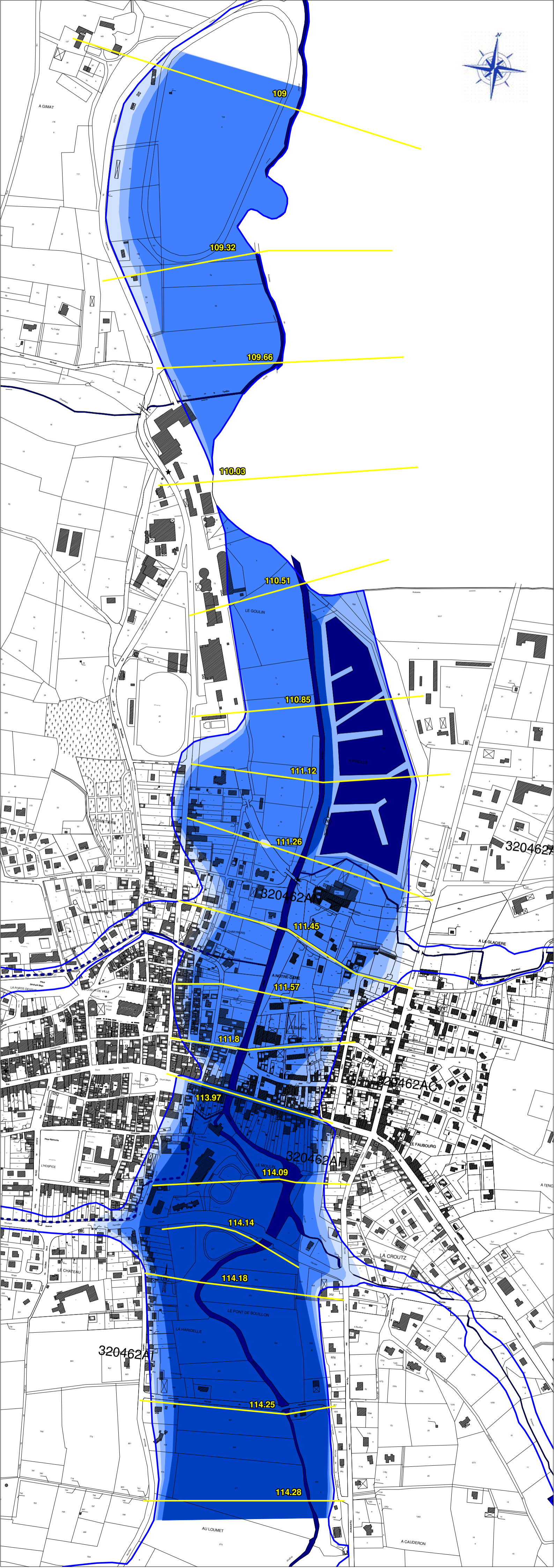
COMMUNE DE VIC-FEZENSAC

PLAN DE PREVENTION
DES RISQUES D'INONDATION







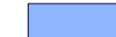
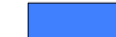

Carte des hauteurs

Echelle 1/5000

Janvier 2007
GRI20152D / EM



LEGENDE

-  Cours d'eau
 -  Tronçon enterré
 -  Profils en travers
 -  110.03 Hauteur de référence (m NGF)
 -  Zone inondable
- Hauteurs d'eau**
-  H < 0.5 m
 -  0,5 < H < 1 m
 -  1 < H < 2 m
 -  H > 2 m

Crue de référence prise en compte sur l'Osse :
juillet 1897