



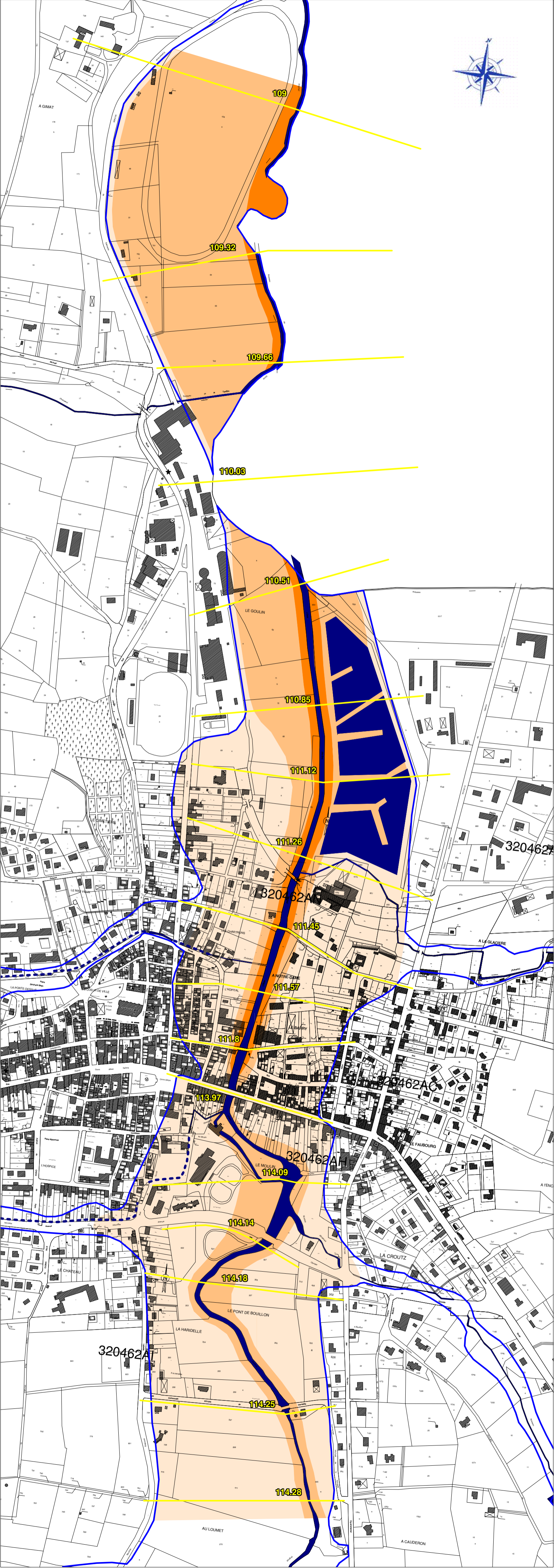
COMMUNE DE VIC-FEZENSAC

**PLAN DE PREVENTION
DES RISQUES D'INONDATION**




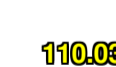

Carte des vitesses

Echelle 1/5000





Janvier 2007
GRI20152D / EM



LEGENDE

-  Cours d'eau
-  Tronçon enterré
-  Profils en travers
-  110.03 Hauteur de référence (m NGF)
-  Zone inondable

Vitesses d'écoulement

-  Eaux mortes ($V < 0.2$ m/s)
-  Courant faible ($0.2 < V < 0.5$ m/s)
-  Courant fort ($0.5 < V < 1$ m/s)
-  Courant très fort ($V > 1$ m/s)

Crue de référence prise en compte sur l'Osse :
juillet 1897